

# KROLIK

19



36

HANDMADE TILES  
CERAMIC INTERIORS



# Table of Contents



About Królik	03
Meet Our Team	04
Manifesto	06
Our Values	07
Collections	13
Tiled Stoves	22
Compositions	24
Colour Palette	31
Practical Info	32
Contact Us	35



# A House of Imagination

Królik is the young and contemporary design tile brand from Kaflarnia Karny Kafel-Kar, one of Central Europe’s oldest tileworks. Renowned for its distinctive glazed relief ceramics and refractory stoves, Kaflarnia Kafel - Kar is one of the few manufacturers that can be called a Royal Tileworks, as they have renovated tile stoves in the Royal Castle in Warsaw and many historical buildings.

The etymology of the word Królik comes from the Old Germanic word Kūnik, which means today’s “King” (in Polish, “Król”). It refers both to a rabbit and sounds like “little king” in Polish—referring to the royal tileworks title. Our hand-pressed tiles, sculptural bas-reliefs, and ornate tiled stoves adorn the walls of historical palaces and warm the interiors of extraordinary homes.

Królik brings a bold and modern vision to a time-honoured art, daring you to realise your own unique ceramic interiors for residential and public spaces. Envisioned by Creative Director Aleksandra Żeromska and brought to life by Kaflarnia Karny’s master artisans, Królik’s wall ceramics transform residential homes and public spaces with their sumptuous colours and ornate surfaces, radiating beauty, opulence and a joyous spirit.

Królik combines this noble Polish art with an imaginative and contemporary design spirit. Our sumptuously tactile glazed tiles invite you to create unique spaces of joy, beauty, and enchantment.

Make. Believe. Discover the House of Królik. 



THE SPIRIT OF KRÓLIK

# A spirit of everyday reverie

Królik's Creative Director Aleksandra Żeromska transforms everyday objects into fantastical creations at her award-winning Art and Design studio. An expert in Design for Craftsmanship, her vivid work and signature style can be seen across the world of luxury interiors in her collaborations with leading industry brands.

Aleksandra Żeromska  
KRÓLIK CREATIVE DIRECTOR

photo: Alicja Lesiak



“We are all looking for beauty. Królik is a reflection of our longings for art and the imaginary world that we all have inside, which we cannot express, or cannot find the solutions to express.”





THE SPIRIT OF KRÓLIK

# Three generations of savoir-faire

Kaflarnia Karny, a renowned manufacturer of "Piecze Kaflowe", traditional Polish tiled stoves - has been operating at its original tileworks in Hryniewicze for almost 100 years. With expertise handed down over generations, we've refined unique manufacturing processes. Today, Rafał and Sylwia Karny keep the family's rich legacy alive with a commitment to excellence and producing exquisite ceramics with distinctive character.

Rafał and Sylwia Karny  
KRÓLIK CO-OWNERS



## OUR MANIFESTO

We believe in the power of art and design—authentic creations that come from the heart. Our brand is a counterpoint to fleeting trends and mass-produced objects that replicate what has been and what has already been done.

We are driven by imagination and innovation, prioritising quality and placing human values and needs at the center of our creations.

We believe there is room for dreaming and boldness in the way we design spaces. Our mission is to be the answer for those looking for something truly unique—spaces that have never existed before.

Dare to dream.

At the heart of what we do is multi-generational craftsmanship. We are committed to preserving tradition while delivering exceptional quality, straight from the hands of our craftsmen. Our products reflect a depth of knowledge, attention to detail, and passion that has been passed down through generations.





OUR VALUES

# Craftsmanship

Królik is connected to history, tradition, heritage, fine quality, and craftsmanship. Our parent brand is Kafel-Kar , which we will sometimes refer to as Kaflarnia Karny, which dates back to 1936. Królik is a brand with heritage, and the history, knowledge, and traditions of Kaflarnia Karny are embedded in Królik’s DNA and savoir-faire.

We use multiple traditional methods to shape tiles with deep relief patterns and textured surfaces. Hand moulding involves pressing clay into a plaster mould. Press moulding involves lowering a press onto a block of the clay to imprint the shape.



OUR VALUES

# Art & Design

Although we draw on the heritage roots of Kaflarnia Karny, Królik is youthful, modern, artsy, and forward-thinking. Królik is an art brand - the pieces are produced in small batches, by hand. Each collection has a story behind it. The brand is also made to provoke thought and emotion. We convey our merit as a design brand with technical details and a focus on the meticulous methods of production as well as the human hands who create them: designers, master craftspeople, and artisans.

Our collections are being designed by leading industry professional, artist and designer - Aleksandra Żeromska.







illustration: Aleksandra Żeromska

OUR VALUES

# Imagination

Królik pieces are unique, new, and they spark the imagination—yet at the same time they can fit and complement any home, or hotel, or bar, or restaurant. The message is: you too can imagine and create your own richly magical space—your own “palace” of beauty, where your dreams and inner longing for beauty can become a reality.



OUR VALUES

# Freedom

At the core of Królik lies an ability to imagine new, a interior design that wasn't dreamed of before. We escape the rules, introduce new typologies of objects, but all is to create a very multi-dimensional product, that thanks to its versatility and customisation can fit any interior.

We follow our hearts.







OUR VALUES

# Uniqueness

Although Kafel-Kar (Kafłarnia Karny) is a heritage brand, Królik is young, new, bold, brave, cool, quirky, groundbreaking, and innovative. We show that we do unique things and we're not afraid to be different. There are no products like ours currently on the market. Królik empowers people to exercise their individuality and artistic sensibility to create something fresh and different. Królik flies in the face of dominant impersonal and homogenising trends in design. We stand for counter-uniformity.

photo: Alicja Lesiak



OUR VALUES

# Responsability

Spiritually and aesthetically, we follow in the footsteps of the Arts & Crafts, Art Nouveau, and Art Deco movements that were a counterweight to the industrial revolution. This should be connected to the fact that we embrace one-off and small scale production. We offer custom-made and bespoke made-to-measure pieces.



photo: Alicja Lesiak



# Collections

Królik Collections combine art symbolism with contemporary design, an artisanal attitude with a visionary verve. Unique ceramic interiors for rekindling memories and realising dreamlike spaces.





COLLECTION

# New Eden

Rewriting the story of returning to Eden. Wondrous nature, majestic animals and abundance of sensations imprinted in the memory. Conceived in Aleksandra Žeromska's original drawings, the New Eden Collection creates spaces of belonging to awaken our shared imagination. Isn't it time for paradise to return to Earth? This evocative collection reminds us of nature's abundance, stimulating the senses and bringing harmony.



# New Eden Wall Tiles



NIGHTJAR  
30X30X4,5 CM



DAFFODIL  
30X30X4 CM



PRIMROSE  
30X30X3,3 CM







# New Eden Wall Tiles: Forget-Me-Not Decor



FORGET-ME-NOT  
29X29X5,8 CM



FINISHING TILE  
30X15X1,4 CM



DROP LEAVES  
30X45X3,5 CM



LITTLE LEAVES  
30X45X2,6 CM



WILD LEAVES  
30X15X3,0 CM



# New Eden Border Tiles



SNAKE MIDDLE  
30X16X2,8 CM



SNAKE HEAD-TAIL  
30X7,5X2,8 CM







With a ceramic hanging system at the back, easy to move and rearrange on the wall.

# New Eden Bas-Reliefs



RABBIT  
30X42X5 CM



LYNX  
45X17X3,2 CM



APPLE VASE  
22X29X5 CM



FROG  
22X22X6,6 CM



COLLECTION

# Happiness

Love. Luck. A small offering. The Happiness Collection bestows the good fortune of the Rabbit upon those in its presence. Accent ceramics for the home, with signature Królik spirit, designed by Aleksandra Żeromska.

Small, joyous accents for the home. Inspired by universal symbols of love and luck, the Happiness Collection encapsulates the Królik character in a small and charming format. Handcrafted ceramic wall sculptures and accent tiles for people and places close to your heart. Elevate any space with an elegant border of fine ceramic trim tiles. Królik wall moldings and finishing tiles can be used to create decorative cornices, dado rails, and architraves to frame doors and windows.







# Happiness Border Tiles



WAVE  
30X14X2,4 CM



RYTHM  
30X7,5X1,4 CM



HEARTS  
30X7,5X2,2 CM



JOY  
30X7,5X2,3 CM



VIOLETS  
30X7,5X2,6 CM



CERAMIC PLINTH  
30X10X3 CM



SMOOTH TILE  
30X30X1,4 CM



# Happiness Bas-Reliefs



POPPY  
22X22X3,6 CM



MALVA  
22X22X3,7 CM



DAISY  
22X22X3,6 CM



CLOVER  
22X28X3,7 CM



HEART  
22X20X4,4 CM



With a ceramic hanging system at the back, easy to move and rearrange on the wall.



# Tiled Stoves

A vivid dream by the fireside. Radiating warmth and charm, the traditional Piec Kaflowy - Tiled Stove - has been re-imagined as a bold focal point for the contemporary home.

As specialists in the manufacture of refractory tiles, Królik craftsmen produce exceptional precision-made pieces to last generations.





## Calor Amicus: Warm friend at the heart of the home

A vivid dream by the fireside. Radiating warmth and charm, the traditional Piec Kaflowy - Tiled Stove - has been re-imagined as a bold focal point for the contemporary home. As specialists in the manufacture of refractory tiles, Królik craftsmen produce exceptional precision-made pieces to last generations.

## Bespoked Tiled Stove

Based on our proposals, we offer you a wide range of customizations: decorative tiled stoves, working tiled stoves with a fireplace insert, and various tiles and colors.

Do you have a specific project in mind for which our tiled stoves would be perfect? Don't hesitate to contact us. With nearly 100 years of experience in manufacturing tiled stoves, we are confident we can meet your needs.



# Compositions

Królik Collections combine art symbolism with contemporary design, an artisanal attitude with a visionary verve. Unique Ceramic Interiors for rekindling memories and realising dreamlike spaces.



# Interior inspiration #1

TILES IN THIS COMPOSITION:



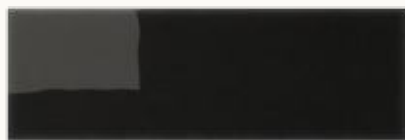
NIGHTJAR



WAVE



RABBIT



CERAMIC PLINTH







# Interior inspiration #2

TILES IN THIS COMPOSITION:



NIGHTJAR



DAFFODIL



RYTHM



CLOVER



LYNX



CERAMIC PLINTH



# Interior inspiration #3

TILES IN THIS COMPOSITION:



HEARTS



JOY



APPLE VASE



FROG



RABBIT







# Interior inspiration #4

TILES IN THIS COMPOSITION:



SNAKE MIDDLE



SNAKE HEAD -TAIL



SMOOTH TILE  
(SHADED GLAZE)



CERAMIC PLINTH



# Interior inspiration #5

TILES IN THIS COMPOSITION:



FORGET-ME-NOT



WILD LEAVES



CLOVER



CERAMIC PLINTH







# Interior inspiration #6

TILES IN THIS COMPOSITION:



FORGET-ME-NOT



FINISHING TILE



DROP LEAVES



WILD LEAVES



# Color Palette

All of our tiles are available in special colors from our palette upon request. We take great pride in our selection and have carefully developed the perfect shades. Color is at the heart of what we do.

Planning a unique project? Our artisans can also create a custom color tailored to your vision, helping bring your most artistic dreams to life.



M001  
WHITE



M002  
ECRU



M003  
VANILLA



M004  
FLAX



M005  
SMOKE



M006 - MATT  
ASH



M007  
BLACK



M008  
LEMON



M009  
SUNFLOWER



M010  
WARMTH



M011  
SUNSET



M012  
AUTUMN



M013  
TANGERINE



M014  
AMBER



M015  
BLUSH



M016  
FRECKLED



M017  
RASPBERRY



M018  
FLAME



M019  
CHERRY



M020  
WINE



M021  
HEATHER



M022  
VIOLET



M023  
PLUM



M024  
ELDERBERRY



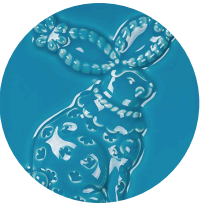
M025  
LAVENDER



M026  
WIND



M027  
CLOUD



M028  
SEA



M029  
BLUEBERRY



M030  
ULTRAMARINE



M031  
NIGHT



M032  
MINT



M033  
TURQUOISE



M034  
LAKE



M035  
AURORA



M036  
PEACOCK



M037  
EMERALD



M038  
FOREST



M039  
GRASS



M040  
GOOSEBERRY



M041  
NETTLE



M042  
MOSS



M043  
MEADOW



M044  
CAPER



# Practical Info



# Characteristics & Application

## DECORATIVE, STOVE, AND FIREPLACE TILES – CHARACTERISTICS AND APPLICATIONS

Thank you for your interest. We would like to present our product from both the production and practical use perspectives, as well as familiarize you with the warranty conditions.

Tile manufacturing is a highly regarded craft worldwide – the result of human craftsmanship. The main producers of stove, fireplace, and decorative tiles are still small family-run workshops, based on tradition, just like our tile factory.

Tiles are made from exclusively natural materials and raw materials, primarily various clay and chamotte mixtures. During processing and multiple firings, high temperatures transform the clay into an ecological and safe material for use, acquiring properties that other building materials do not have – functional and durable, capable of lasting for centuries without damage.


The beauty and aesthetic of the tiles are highlighted through decoration with multi-colored glazes, bas-reliefs, and ornamental painting. The variety and freedom of choice in creation and arrangement offer enormous potential for designers and contractors.

All the qualities of tile ceramics have their background, which defines them as a material that is untamed and non-homogeneous in terms of chemical and physical composition. Therefore, we consider it a “living” material that requires humility and daily compromises. At the same time, these same characteristics give tiles their unique nature, often sought by connoisseurs of handcrafted items and those who wish to have unique, natural pieces of craftsmanship in their surroundings. As manufacturers of stove and fireplace ceramics, we understand that this individual character of the product is the greatest asset for the buyer.

In response to our clients' wishes, we always inform and emphasize that the range of expectations should be expanded to include the natural differences that result from the firing characteristics of clay and glaze.

Each order will be glazed individually according to the chosen color. Therefore, each product is always made with a specific customer in mind. This, along with other factors related to our nearly 100 years of artisan know-how, requires patience and time. On our part, we guarantee that the final result will be unique, and the product itself will be one-of-a-kind – there are no two identical tiles.

If the order concerns a wall composition of tiles or a fireplace, the customer should consult it with the person responsible for the project and installation (architect, contractor, installer). We recommend working with professionals who will prepare the design with the utmost care. It should be noted that in case of individual needs, all tiles can be cut to the desired size, decorated with liquid gold, and there is also the possibility of additional glazing of the visible edges of the tile's thickness. All these features must be taken into account in the execution project and the order.

For individual bas-relief orders, installation is carried out using the standard method of hanging objects on the wall. They have a ceramic hanging system on the back, to which mounting elements (screw and wall plug) and an installation guide are attached. The weight of the objects and the material of the wall must be taken into account. The bas-reliefs can be freely arranged on the wall but should not be glued to the surface. 



# Conditions for Order Fulfillment & Warranty For The Królik Brand

Kafel-Kar Rafał Karny, 15-378 Białystok, Hryniewiczze 3B, NIP 9661341458.		
<div>1. The manufacturer, hereinafter referred to as the Manufacturer, is a ceramic workshop that accepts and fulfills individual orders for ceramic tiles according to the offer available at <a href="http://www.krolik1936.com">www.krolik1936.com</a>. The goal of the Manufacturer is to fulfill the order in accordance with the specification provided by the Client (hereinafter referred to as the Ordering Party).</div>	<div>10. A natural production feature of tiles is the presence of faint hairline scratches ("harys"), which may occur on the surfaces of tiles. These are a natural property of transparent glazes and are not considered defects in the quality of the tile surface. The hairlines/craquelé add aesthetic, original charm and are a desired effect that adds nobility to the tiles. They do not affect the primary function and durability of the ordered item and cannot be subject to warranty claims.</div>	<div>18. The Ordering Party places the order exclusively in writing, either on an order form or via email. The order should include the Ordering Party's details, contact number, tile names with symbols, color names with symbols, and quantities. If the project requires it, additional cutting or glazing of visible edges of the tile should also be included. In the next step, the Manufacturer sends a cost estimate for the Ordering Party's approval. The order is considered accepted after the deposit of 50% of the order value is paid.</div>
<div>2. Order fulfillment occurs based on a written order placed by the Client (hereinafter referred to as the Ordering Party) according to the specification provided by the Ordering Party and after acceptance of these terms and conditions provided by the Manufacturer.</div>	<div>11. The Ordering Party declares that they possess the necessary qualifications to assess and install the ordered product and is trained in health and safety. If the necessary qualifications are not present, supervision by a professional stonemason or an experienced installer of ceramic tiles with the composition declared by the Manufacturer is required.</div>	<div>19. The final price will always be calculated according to the exchange rate of the Polish Zloty, on the day of payment of the order.</div>
<div>3. Acceptance of the order and payment of a deposit for the ordered item is the final acceptance of the execution of the order and these terms and conditions. The date the funds are credited to the Manufacturer's account begins the waiting period.</div>	<div>12. The Manufacturer recommends using materials appropriate for tile installation. No claims will be accepted if construction regulations and standards are not followed.</div>	<div>20. The order is delivered by external courier or freight companies. The Manufacturer is not responsible for delays caused by the courier or freight company's schedule.</div>
<div>4. The time for order fulfillment is individually determined for each order, subject to the possibility of extension or shortening, which will be communicated by phone or email.</div>	<div>13. The Manufacturer advises cleaning tiles with particular care. Cleaning should be done with a dry or slightly damp cloth using mild cleaning liquids designed for glazed surfaces. For tiles decorated with gold or platinum, aggressive, abrasive, or surface-active cleaners should not be used, and caution should be exercised.</div>	<div>21. The Manufacturer remains the owner of the entire order until full payment for the invoice or receipt is made in the agreed-upon form. Once the full amount is credited to the Manufacturer's account, the shipping date is determined. In the case of shipments outside of Europe, the shipping cost may change—either higher or lower—compared to the initial estimate due to factors beyond the Manufacturer's control, related to changes in courier company rates.</div>
<div>5. The Manufacturer fulfills orders according to the specification provided by the Ordering Party, and therefore is not responsible for any discrepancies with the project. All additional work not resulting from standard execution, such as additional cutting, non-standard glazing, various unusual edges, elements, etc., should be reported and described with drawings attached to the order.</div>	<div>14. Upon receiving the shipment or collecting it personally, the Ordering Party is required to check the conformity of the received goods with the placed order and any additional later arrangements. A review of the order must always be done: unpacking all items and performing a control assembly of the order on a flat surface. A review of the completeness, shades, and coloring of the tiles should be carried out. Excess items ordered will not be accepted for return.</div>	<div>22. In resolving potential disputes and complaints, the parties involved must follow the provisions of the Civil Code, with the Ordering Party being the contracting party for the Manufacturer.</div>
<div>6. The tile color presented on the website, in catalogs, and samples may slightly differ from the colors being currently produced.</div>	<div>15. The Manufacturer ships orders using an external courier/transport company. The shipping costs are covered by the Ordering Party.</div>	<div>23. The Manufacturer provides a 2-year warranty on its products, subject to the conditions outlined above.</div>
<div>7. When using transparent glazes, discoloration and slight color shade differences may occur, which are not considered defects. These discolorations and shading are a characteristic feature of these glazes and are a key decorative feature.</div>	<div>16. Complaints regarding discrepancies reported later than 7 days from the date of receipt of the goods will not be considered. Actions by third parties or force majeure will be subject to a separate procedure after prior communication with the Manufacturer, but no later than 24 hours from the delivery receipt date.</div>	<div>I have read the product characteristics, warranty, and order fulfillment conditions.</div>
<div>8. When choosing matte glazes, the Manufacturer is not responsible for improper handling of tiles during installation, especially when grouting and cleaning the surfaces. The Manufacturer can provide training for the Ordering Party and the Contractor upon prior request. This applies particularly to glazes sensitive to incorrect grouting and cleaning, such as M006 ASH.</div>	<div>17. The Manufacturer fulfills the order based on an individual project provided by the Ordering Party. Therefore, such a prepared product cannot be returned or exchanged.</div>	
<div>9. Matching identical tiles (as in the case of wall or floor tiles) is not a production goal and is not possible for decorative, stove, and fireplace tiles! The dimensional tolerance of tiles, products, and ceramic elements is ±0.5%.</div>		



Discover the House of Królik.

[INFO@KROLIK1936.COM](mailto:INFO@KROLIK1936.COM)

[INSTAGRAM.COM/KROLIK1936](https://www.instagram.com/KROLIK1936)

[KROLIK1936.COM](https://www.KROLIK1936.COM)

KRÓLIK